

E.J. Hughes' Views is a Geocache trail initiated by the *Shawnigan Lake Historical Society*. The prize for this cache is a series of coordinates based on E. J. Hughes' paintings. Each destination provides a view that Hughes saw and subsequently painted.

This project was inspired by former SLHS Director, Jim Fielding and his wife (artist), Kathie, who happened on a view that inspired a *Van Gogh* painting during a visit to France.

Once home, they sought the views for E.J. Hughes' paintings.

“Comparing the view with the painting is a learning experience — it helps to see the composition.”



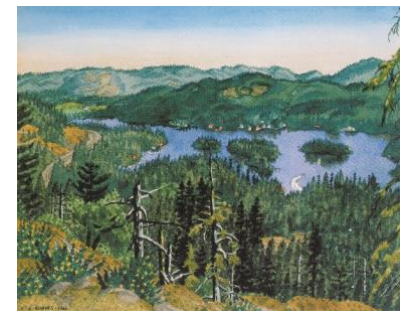
Rose Island, Shawnigan Lake
48° 35.898 N 123° 37.372 W



Old Baldy Mountain
48° 38.184 N 123° 38.444 W



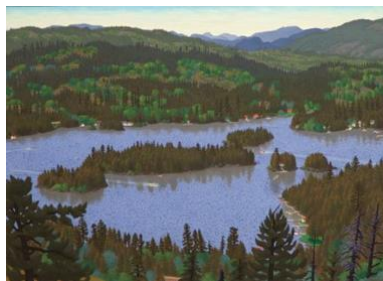
Entrance to the West Arm
48° 38.612' 123° 38.631'W



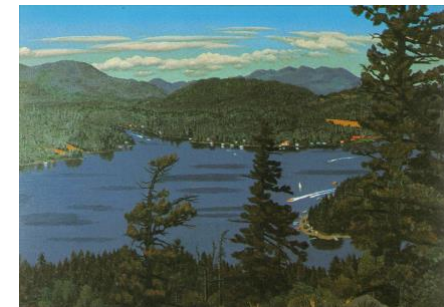
Looking south on Shawnigan
48° 37.650 N 123° 37.545 W



Shawnigan Looking NE
48° 36.343 N 123° 38.312 W



Shawnigan Lake Islands
48° 36.725 N 123° 37.158 W



Looking north on Shawnigan
48° 37.650 N 123° 37.545 W



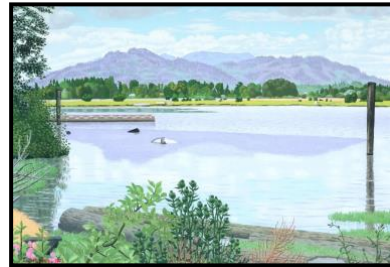
Saanich Inlet
48° 32.063 N 123° 33.559 W



The Public Wharf, Cowichan Bay
48° 44.427 N 123° 37.098 W



Half Tide at Cowichan Bay
48° 44.623 N 123° 37.829 W



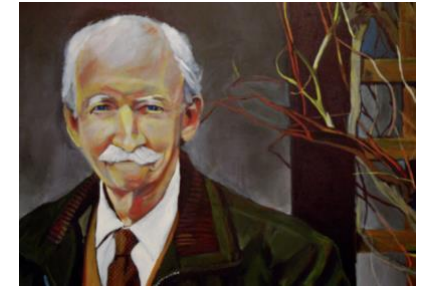
Cowichan Bay & Mt. Prevost
48° 44.581 N 123° 37.829 W



Above Finlayson Arm
48° 34.049 N 123° 32.817 W



Beside the Koksilah River
48° 44.991 N 123° 39.386 W



E.J. Hughes' Views

A Geocache Search

Edward John Hughes (1912-2007) was the first Emily Carr Scholarship recipient and studied under the stewardship of Frederick Varley of the Group of Seven.

For six years during WW II, Hughes worked as a war artist. In 1951, Hughes was discovered by Max Stern, who agreed to buy all of his paintings. This gave Hughes the financial freedom to paint full time.

E.J. Hughes lived at Shawnigan Lake for over twenty years. His last studio and home was in Duncan.

In 2018, one of his paintings sold for \$2,041,000.